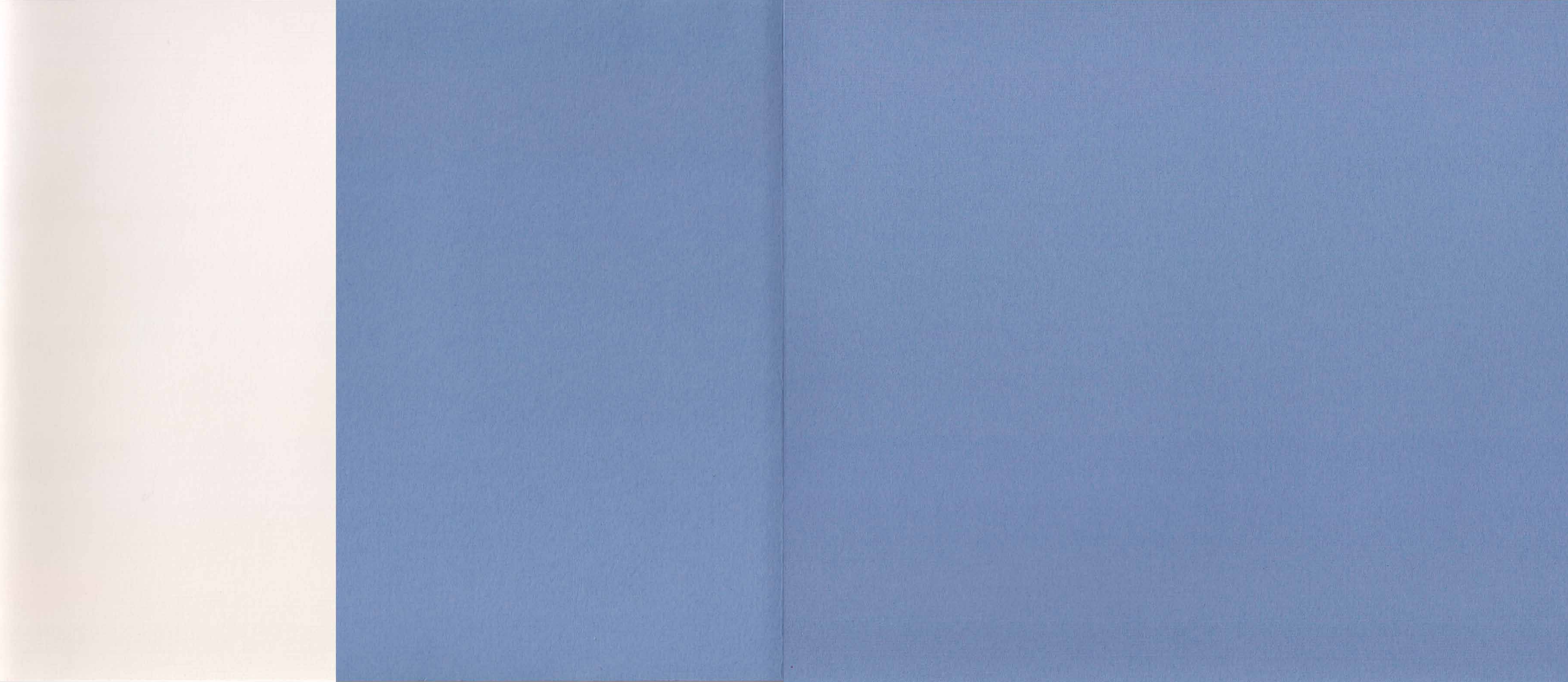


EMILY PATRICK



EMILY PATRICK



EMILY PATRICK

Recent Paintings 2000-2002

Exhibition

The Air Gallery
32 Dover Street
London W1S 4NE
020 7409 1255
7th - 19th October 2002

Enquiries on other dates

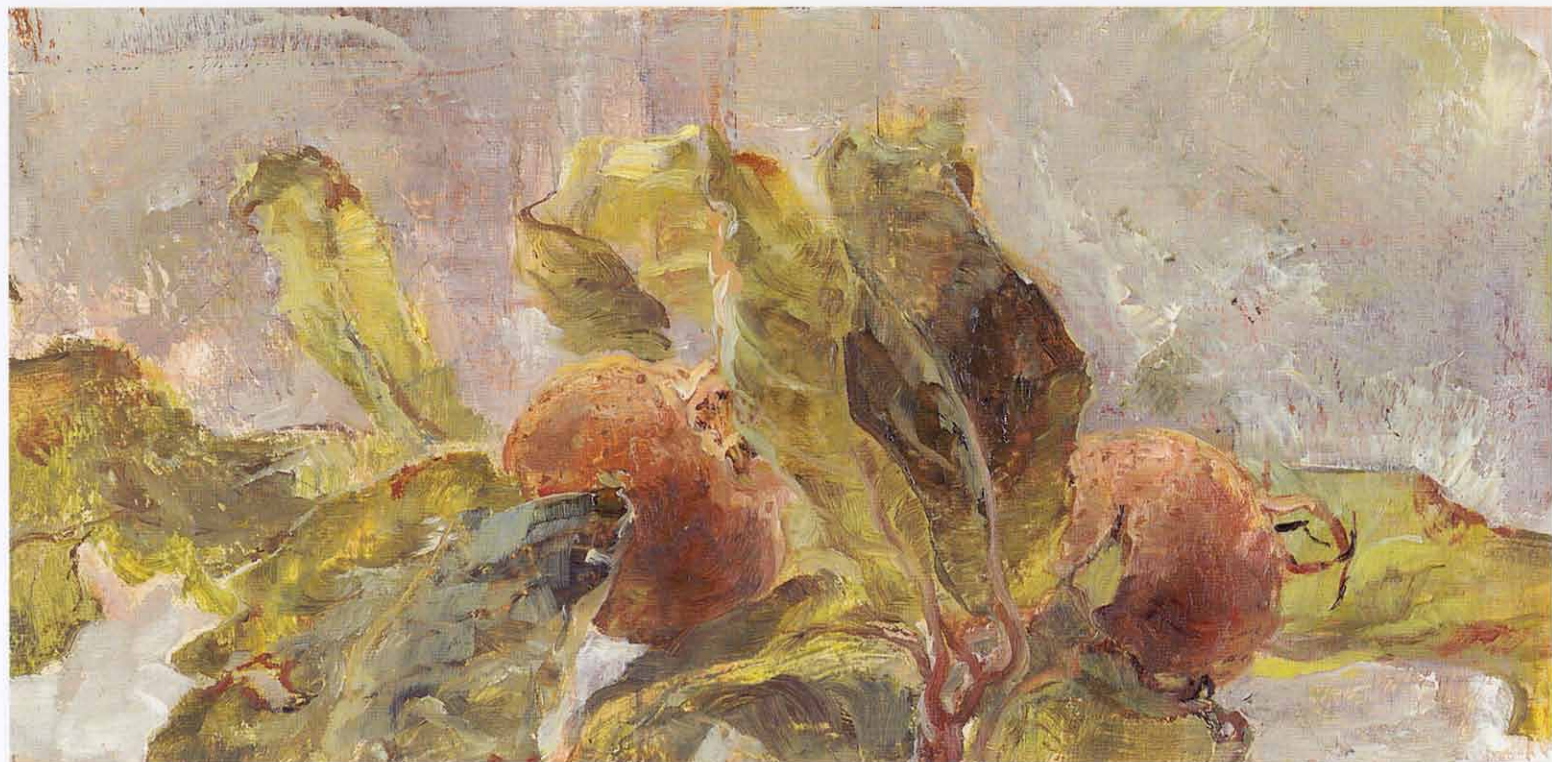
Cawdell Douglas
10-11 Lower John Street
London W1F 9EB
020 7439 2822
mail@emilypatrick.com

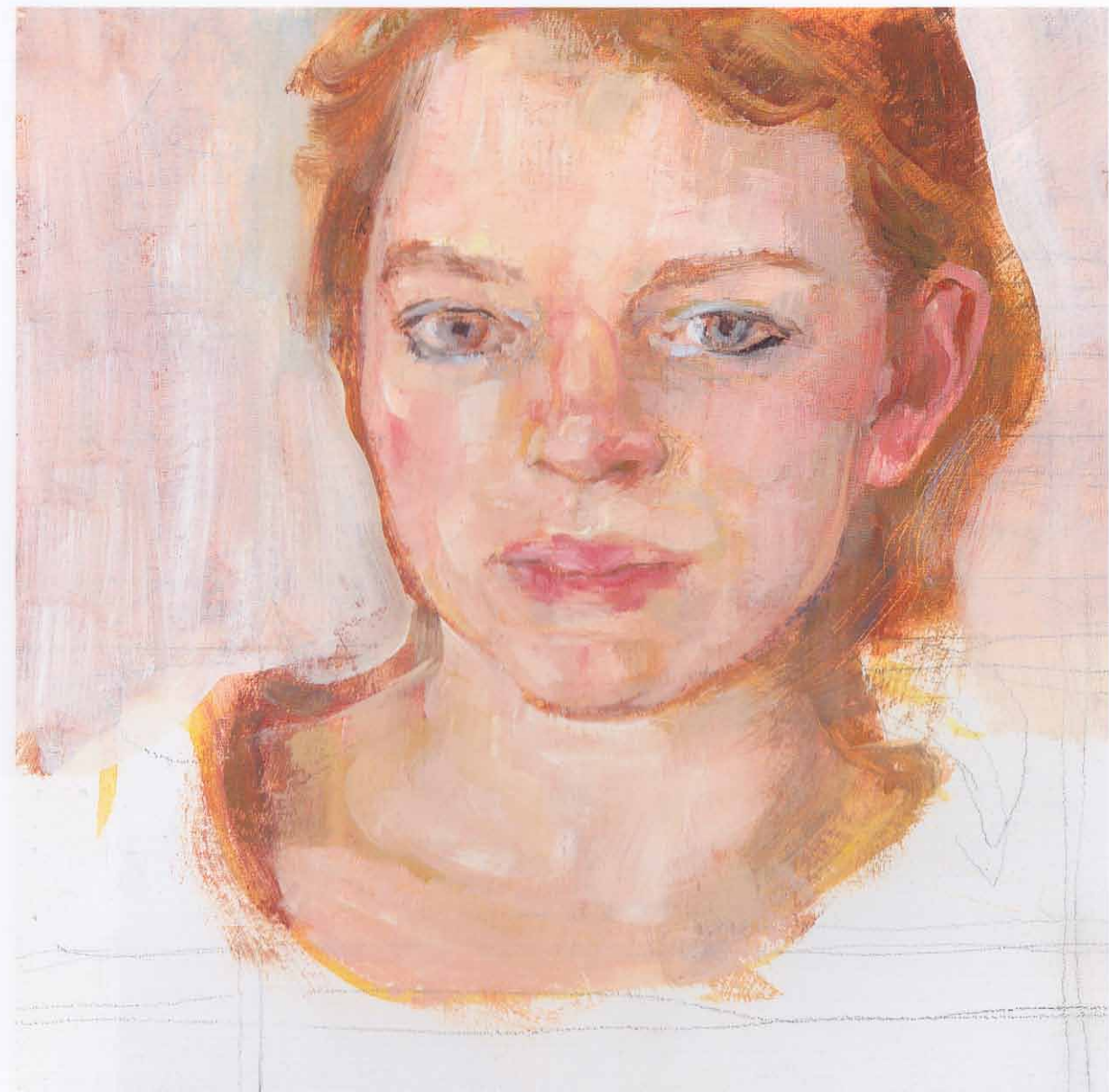




Detail of Elephants Ears in Garden







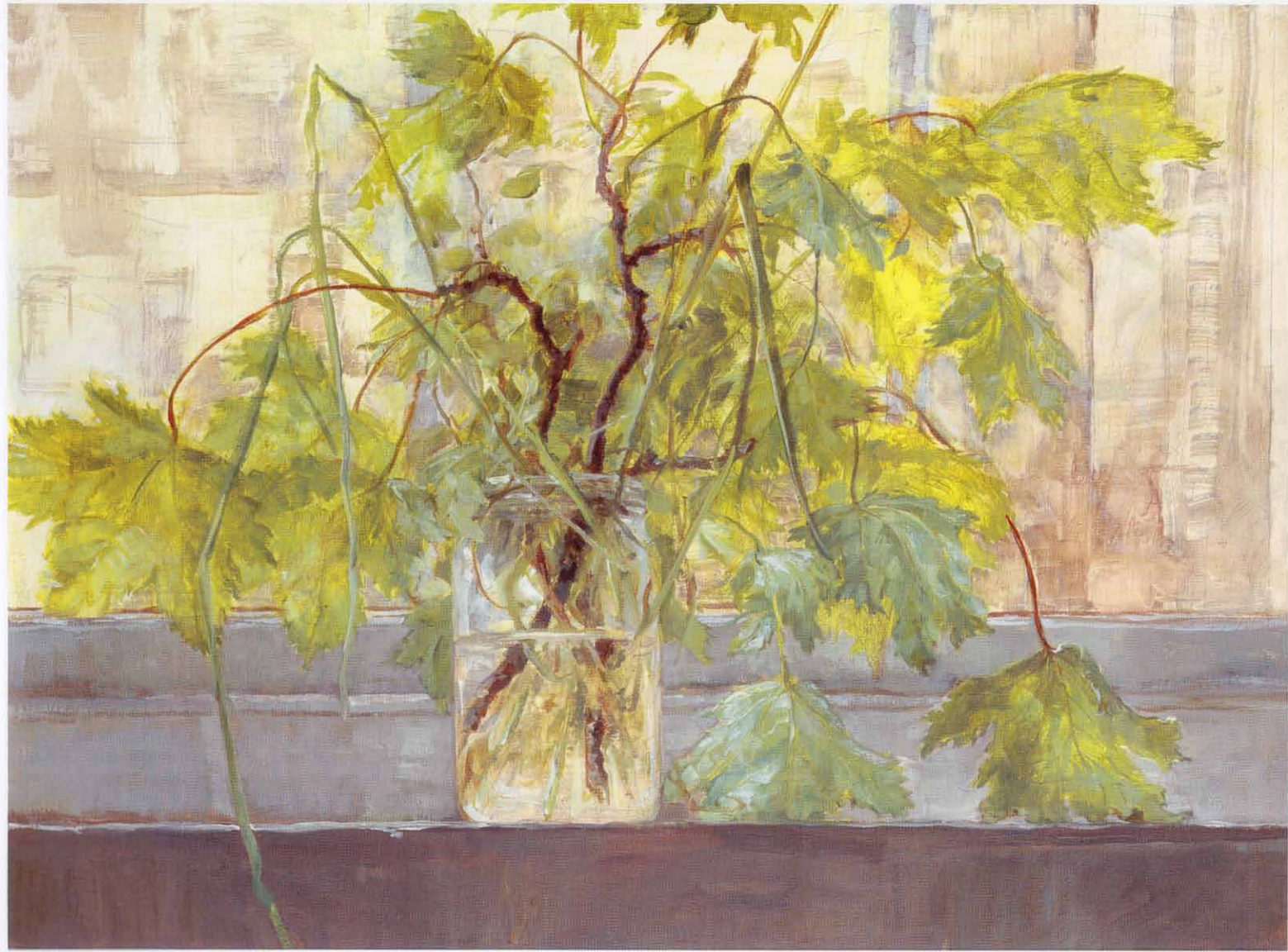




Detail of Rabbits

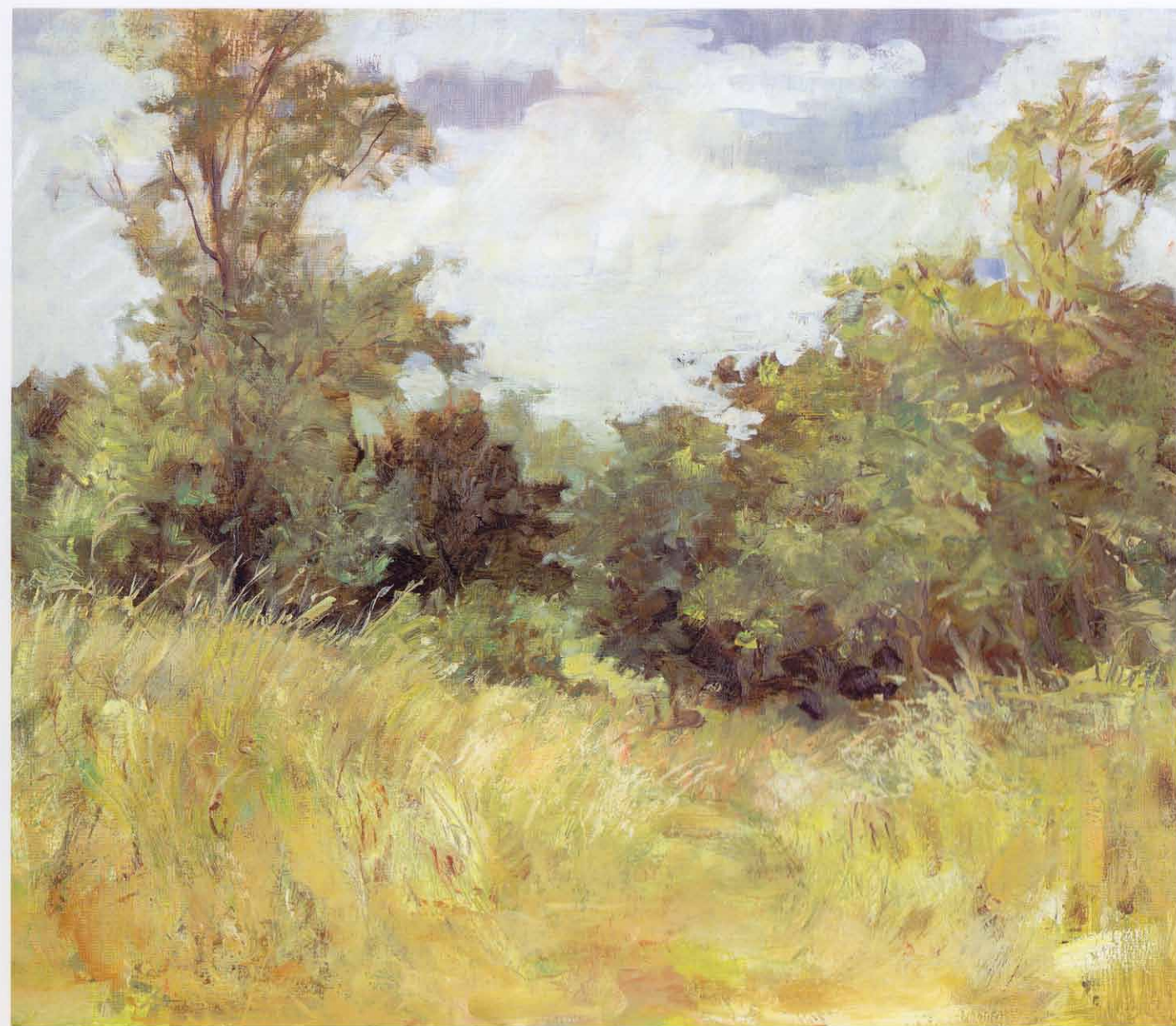


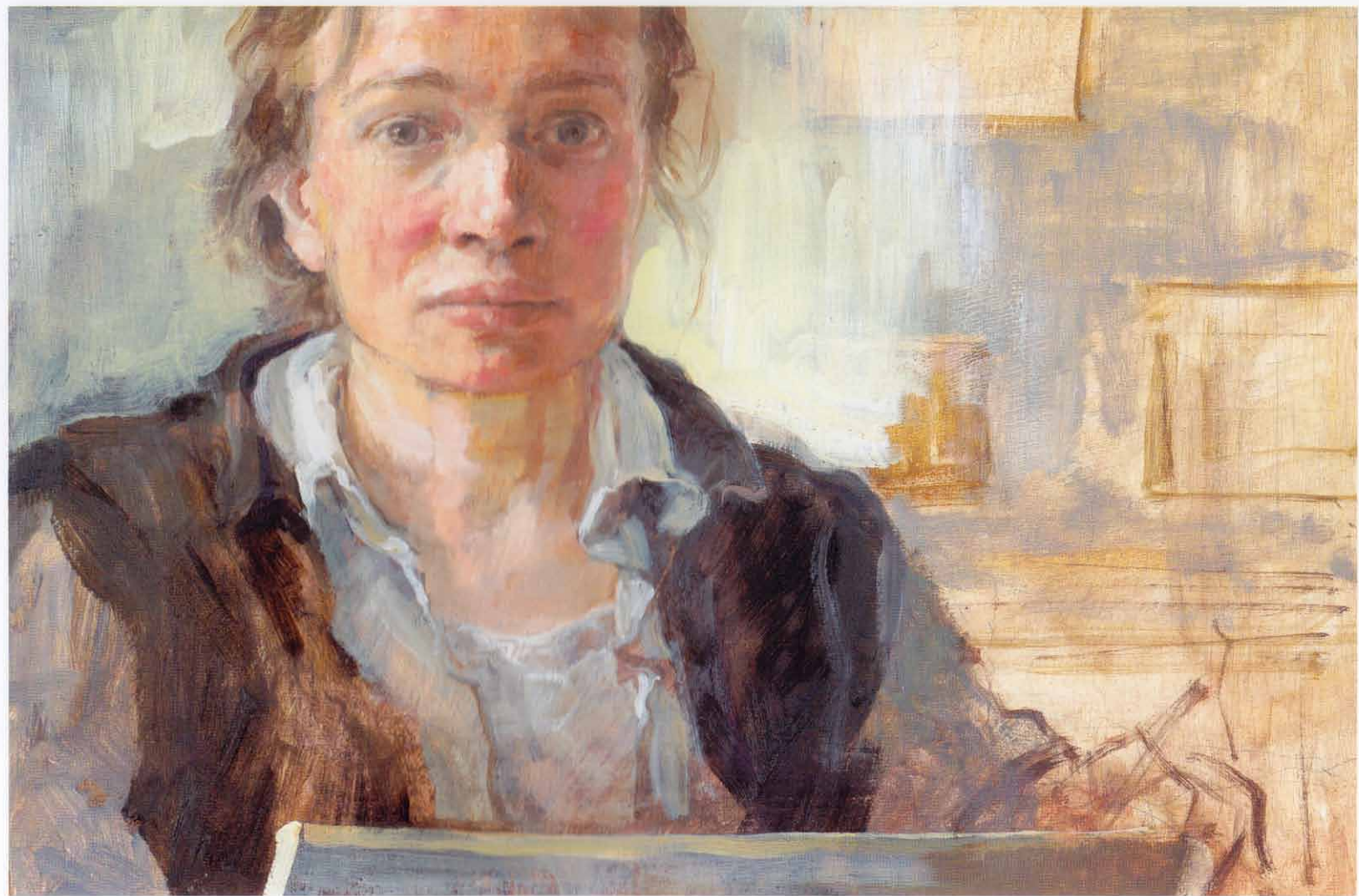






Detail of *Quelle VII (Path across Field)*









BIOGRAPHY

- | | | | |
|-----------|---|----------|---|
| 1959 | born October in Kent | 1987 | John Player Portrait Award, <i>National Portrait Gallery</i> , London WC2 |
| 1974 | drew with John Doyle MBE, watercolourist | 1988 | <i>Carroll Foundation Award</i> , Royal Society of Portrait Painters |
| 1976 | studied with Celia Ward in the studio of John Ward RA | May 1988 | Mother & Child, Birthright Exhibition, <i>Lefevre Gallery</i> , London W1 |
| 1978-1979 | Architectural Association, London | Apr 1989 | Second Solo Show at <i>Agnew's</i> |
| 1979-1982 | Architecture at Cambridge University | 1990 | BP Portrait Award, <i>National Portrait Gallery</i> |
| 1982 | Contemporary Portraits, <i>King Street Galleries</i> , London SW1 | Nov 1992 | third solo show at <i>Agnew's</i> |
| 1983 | New English Art Club, <i>Mall Galleries</i> , London SW1 | Oct 1995 | fourth solo show at <i>Agnew's</i> |
| 1984 | <i>Wraxall Gallery</i> , London SW3 Sarah Long | Oct 1997 | solo show at <i>Gallery 27</i> , London W1, curated by Magdalen Evans |
| 1985 | <i>Bath Festival</i> | Nov 1997 | solo show at <i>Hanover Gallery</i> , New York |
| Oct 1986 | First Solo Show at <i>Agnew's</i> , London W1 | Mar 2000 | solo show at <i>Gallery 27</i> , London W1, curated by Magdalen Evans |
| 1986 | married Michael Perry, Rangoon, Burma | 2002 | solo show at <i>The Air Gallery</i>
32 Dover Street, London W1
7th - 19th October |

CATALOGUE

- | | | | | | | | |
|----|--|----|---|----|--|----|---------------------------------------|
| 1 | Chocolate Digestives and Hare
30 x 35 | 13 | May Leaves on Windowsill
46 x 61 | 24 | Chair with Laundry
76 x 92 | 35 | Scabious and Sketchy Books
37 x 46 |
| 2 | Inside and Outside
60 x 76 | 14 | Boots on Table
45 x 64 | 25 | Crabshell and Mermaid's Purse
25 x 27 | 36 | Windrush Valley
15 x 30 |
| 3 | Elephants Ears in Garden
76 x 92 | 15 | Queille VII (Path across Field)
30 x 35 | 26 | Grass and Turks Caps
41 x 61 | 37 | Paeonia
21 x 33 |
| 4 | Griffith's Medlars
12 x 24 | 16 | Self with Drawing Board
30 x 45 | 27 | Tower Bridge and Customs House
36 x 55 | 38 | Beatrice's Trainers
24 x 46 |
| 5 | Fresians Pigs and Tapirs
34 x 46 | 17 | Vollard Book and Soap
30 x 30 | 28 | Chestnut Leaves in Small White Vase
30 x 36 | 39 | Small Lilac and Maple
34 x 49 |
| 6 | Bluebells and André Gide
26 x 30 | 18 | Abstract II
27 x 55 | 29 | Quink Ink
25 x 23 | 40 | Sketch of Girl in Summer
61 x 61 |
| 7 | Beatrice
30 x 30 | 19 | Queille VIII (Trunks near River)
20 x 30 | 30 | Cabbage with Root II
40 x 55 | 41 | Handkerchief Tree
30 x 61 |
| 8 | Adam Lowe
30 x 30 | 20 | Conch Shells and Base of Vase
29 x 61 | 31 | Lilac on Dark Background
50 x 61 | 42 | Tea Bowls on Green Shelves
36 x 55 |
| 9 | Palette and Books
43 x 76 | | & | 32 | Window Shutter and Hornbeam
30 x 41 | 43 | Artichoke Leaves
71 x 61 |
| 10 | Rabbits
45 x 84 | 21 | Girl with Bowl on Lap
76 x 51 | 33 | Catkins in Glass jar
51 x 76 | 44 | Bananas
15 x 35 |
| 11 | Three Magnolia Flowers
24 x 41 | 22 | Dolls House and Postcards
51 x 60 | 34 | Two Pears on Twig
24 x 33 | | |
| 12 | Leaves and Two Peaches
50 x 61 | 23 | Two Figures Looking into Trees
71 x 76 | | | | |

All pictures are oil on panel, measurements are height by width in centimeters.



