

EMILY PATRICK

Paintings 2005 – 2007

Monday 10 – Friday 21 September 2007

Emily Patrick will be exhibiting her latest paintings at **The Air Gallery, 32 Dover Street, London W1S 4NE** from Monday 10 – Friday 21 September 2007. Visitors will have the chance to enjoy Emily's paintings for the first time since her last sell-out show in 2005. Some 50 landscapes, portraits and still life paintings will be for sale, priced between £2,000 and £25,000.

Most of her paintings are on birch ply with gesso. One is on an antique piece of lacquer, another is on a piece of Venetian plaster.



Sky behind Crinums (91.5 x 92 cm)

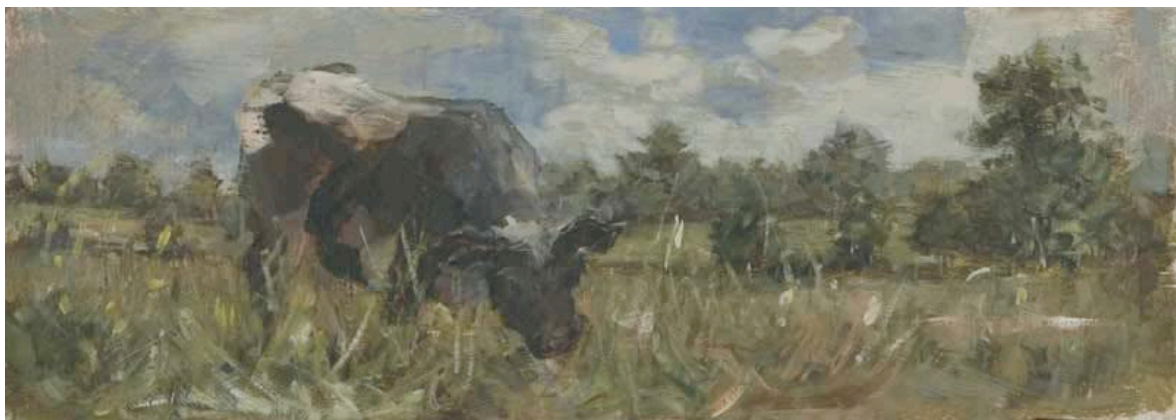
The portraits of plants give an unusual emphasis, often the stalks and leaves are the subject, not the flower heads. This makes them particularly real. She gives us fine botanical details side-by-side with marks that verge on pure abstraction. For example, in **Sky behind Crinums** we are so close to the plants that we are looking straight at the stems and the bud head and up through the crinum flowers to a bold expressionist sky.



Red Maple and Bird (41 x 61cm)

She uses her family home to inspire original still lives and interiors. In **Red Maple and Bird** the hot red leaves are set off by a closely controlled palette of browns and greys. The dying leaves are close to falling and contrast with the liveliness of the stuffed godwit. Her childrens' toys stay where they lay or become the subjects themselves as in **Gorilla and Figures** where they stand in a section of the dollhouse. At other times they are arranged into eccentric compositions such as **Donald Duck and Two Frogs** who live in a bowl surrounded by autumnal oak leaves.

For some people her landscapes are the best pictures. Having grown up on a farm, it is where she originally found her inspiration. In **Daylesford Meadow** she uses a low eye level to give us the sense of lying in the grass looking up at seed heads embracing the sky and we are taken back to childhood.



Small Horizontal Heifer (16.5 x 46cm)

There are a few portraits and these show great empathy for her subjects. There is a painting of **Don Justo Gallego**, famous in Spain for single-handedly building a cathedral. The eyes reveal the strength of this man who is still building in his eighties. **Otto III** is exquisite. You see the vulnerability and intelligence both in the image and in the delicate way it is painted.

Emily Patrick's paintings are acclaimed for their virtuoso brushwork. She uses tempera (egg yolk and pigment) for her translucent, fresh colours. She uses oil for fluid fast brush strokes. She achieves great delicacy, subtlety and at other times great strength and bravery. The work has a refreshing presence in the world of contemporary art. There is an underlying tenderness.

"I hope to lift spirits to bring nature into homes," says Emily, "nature in an exuberant yet benign form. Art does not have to be burdened by terrible things. It is not escapism, the subjects I depict are just as real as more sensational subjects."



Otto III (23.5 x 12.5cm)

An exhibition by this virtuoso yet reticent, delicate painter is always a treat. Patrick's subjects are quiet interiors, unshowy portraits or still-lives, yet with strong, highly detailed brushwork and unusual, rich coloration. She achieves spontaneity, depth of feeling and an enthralling sense of presence. - Financial Times 16th April 2005, Jackie Wullschlager - Critic's Pick

The contemporary UK painter Emily Patrick is acclaimed for her beautiful, quirkily detailed domestic scenes...Light falls delicately on the intimate still lifes and tranquil landscapes. - The Times 23rd April 2005, Rachel Campbell Johnston - The Best of the Arts

Light as air. With her sense of colour and light, Emily Patrick has been likened to a latterday Impressionist, and many consider her the most talented figurative artist of her generation..her delicate touch produces works of real beauty and vibrancy – BBC Homes and Antiques April 2005

For further information and images:

Michael Perry
+44 20 8858 0427

Notes to the editor:

A catalogue will be available.

Opening Times

Monday _ Friday

10am – 5:30pm

Saturday

11am – 5:30pm

Exhibition

The Air Gallery

32 Dover Street,

LONDON W1S 4NF

020 7409 1255(T)